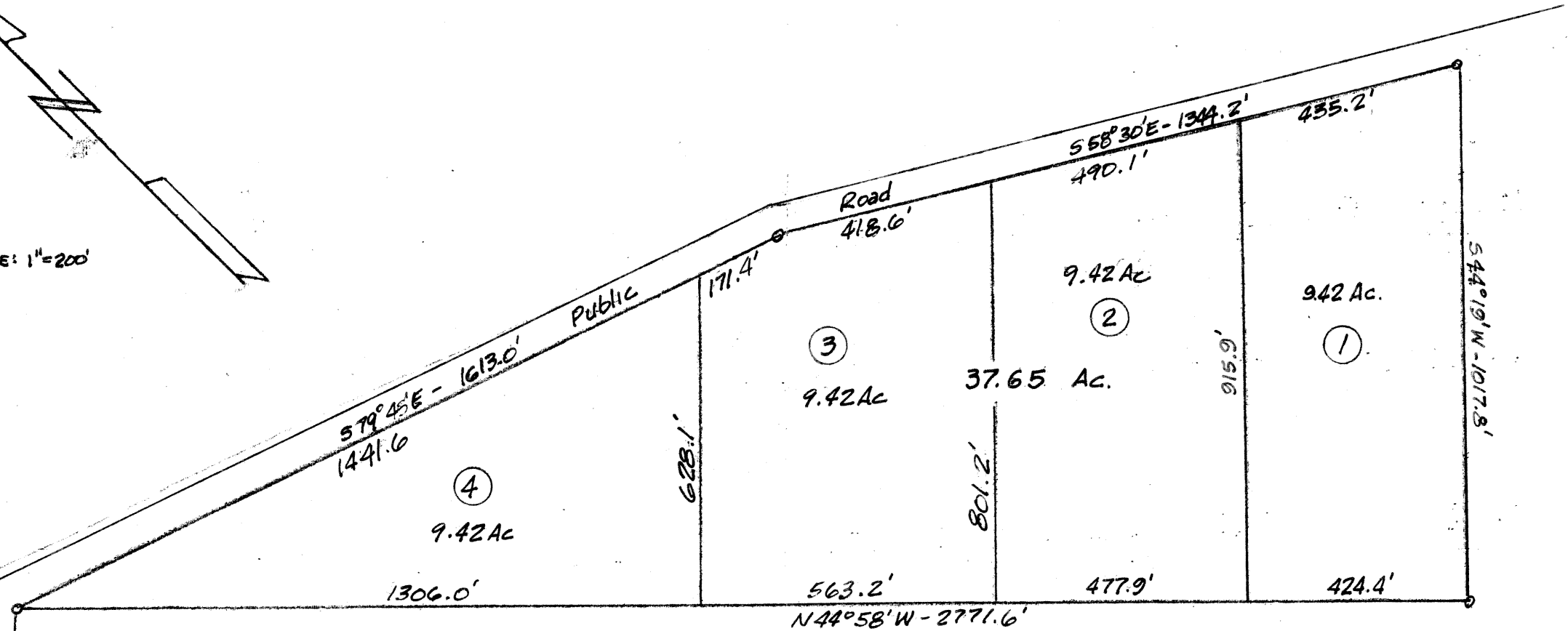


SCALE: 1"=200'



PLAT. No. 2
 OF THE SECOND PARTITION
 OF THE LANDS OF THE
 CHARLES (CAL) MARINO ESTATES

MARINO ESTATES # 2
 JOHN MARINO 37.68 ACRE TRACT
 S.F. AUSTIN LEAGUE No. 10
 Brazos County, Texas

V61.192, Pg. 415

FILED FOR RECORD 3:30 O'CLOCK P.M., 7 DAY OF October
 1958. RECORDED 2 O'CLOCK P.M. 8 DAY OF
 October 1958 TO WHICH I CERTIFY.
 A. B. SYPTAK C.S.C. B. C.
 BY *[Signature]* DEPUTY